

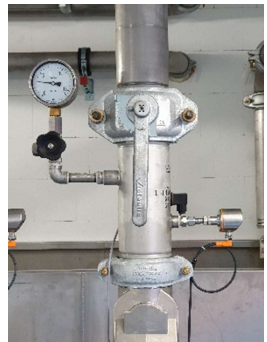


Manfred Reiner Röhren- und Stahlhandel GmbH

THE ROLL-IN GROOVE SPECIALIST FOR VICTAULIC-STANDARDS

Carbon steel – Stainless steel RX – **Stainless steel ST100**

- **NEW IN THE DELIVERY PROGRAM**
- **REINER-ROHRE INT. STAINLESS STEEL TUBES
GROOVED ON BOTH ENDS TYP „VICTAULIC-ST100“**
- On our own machines
- Fully automated
- External diameter: 60,3 - 323,9 mm
- Length of 100 mm - 6 m



Contact: Frederic Schiller, Phone: 00 49 234 9434010, Email: schiller@reiner-rohre.de